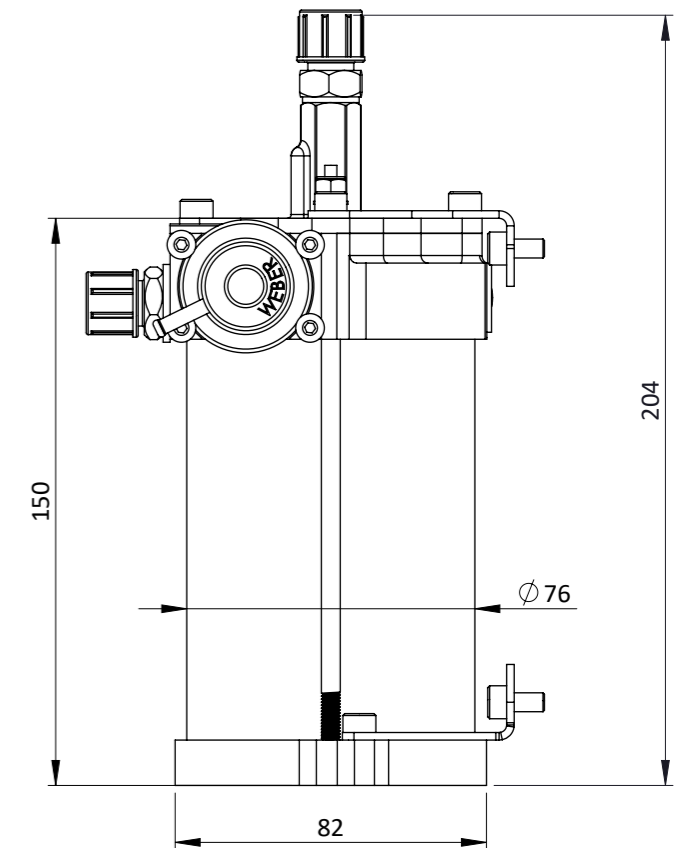
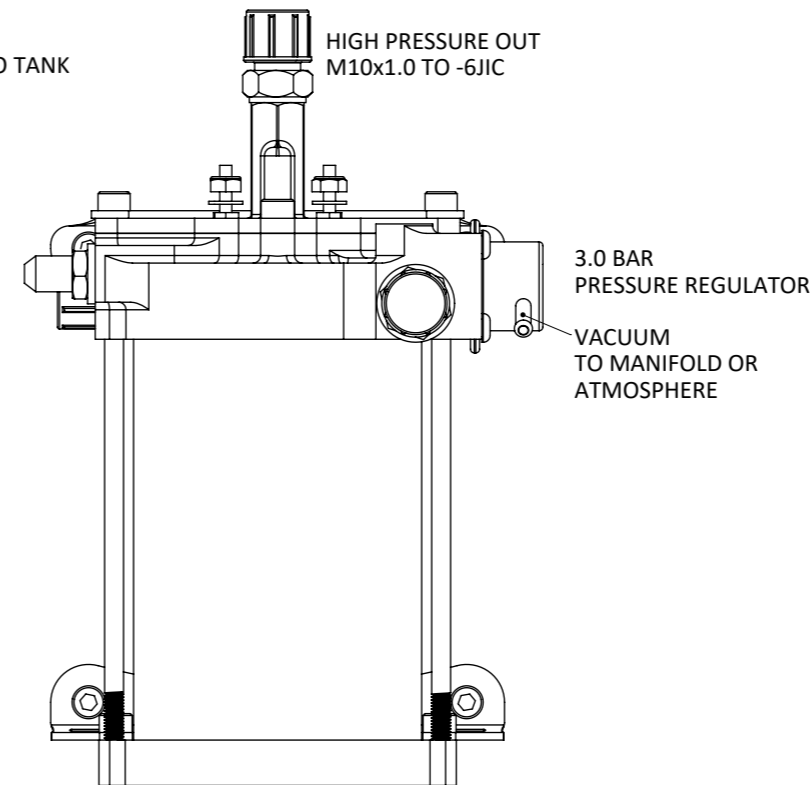
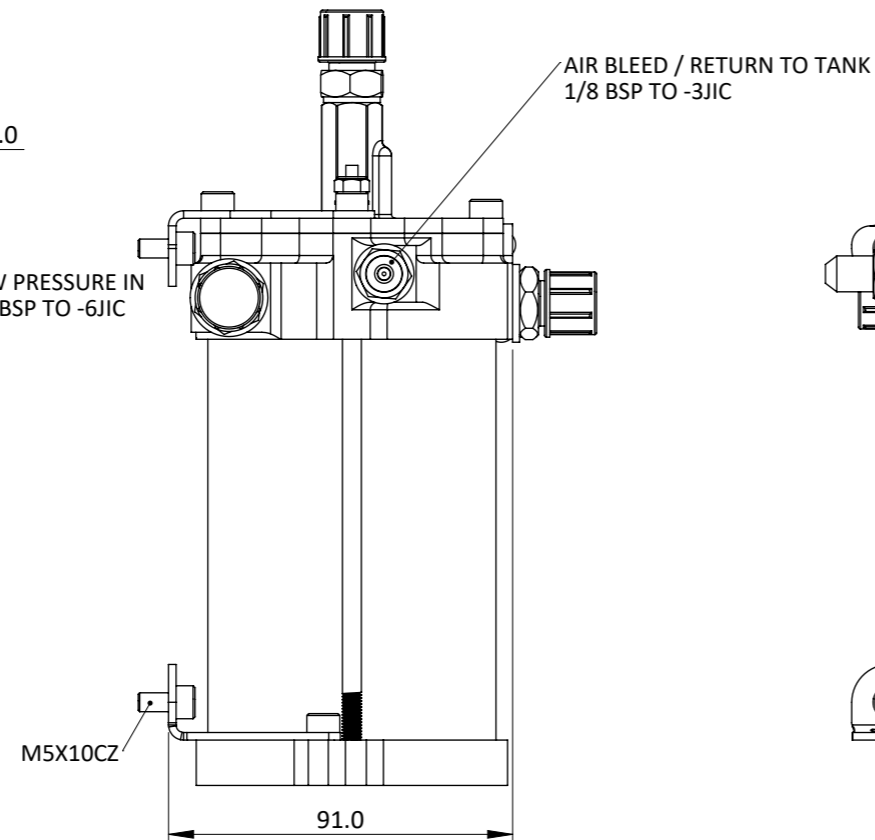
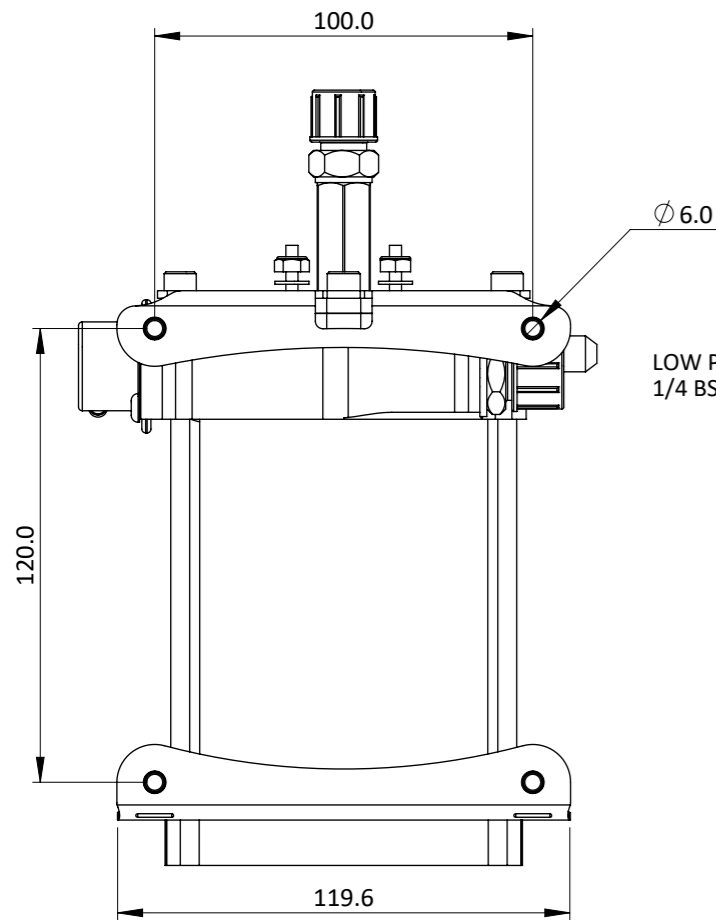
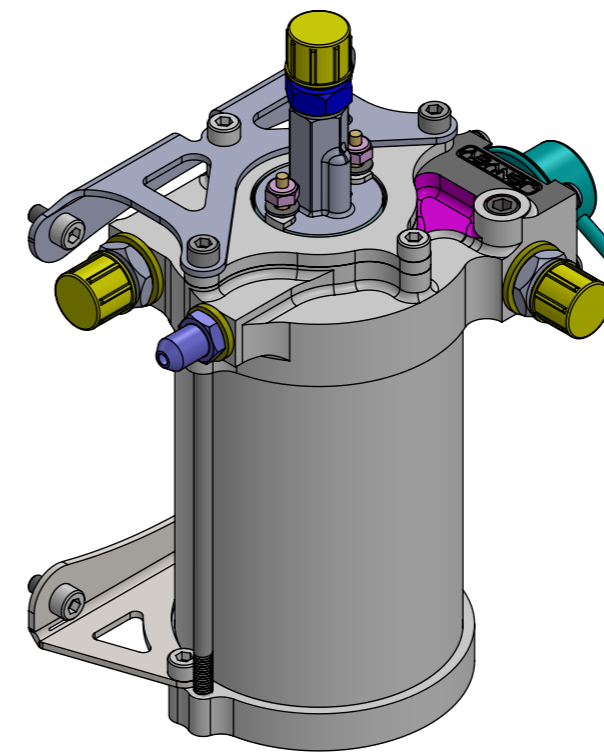
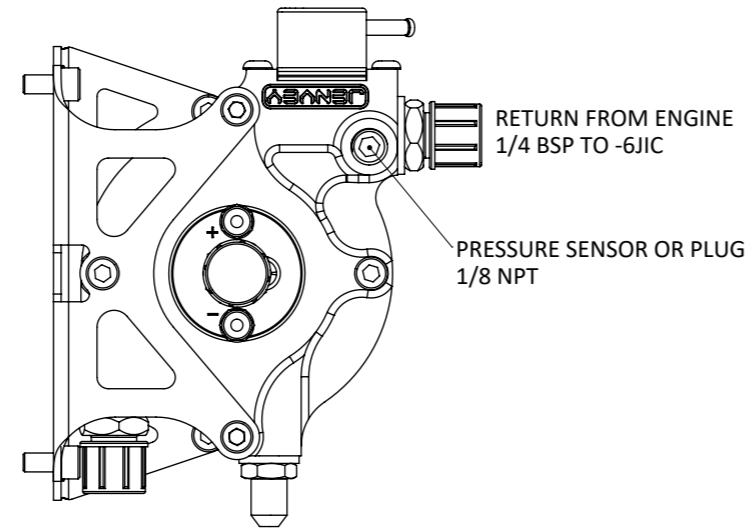


FS2-FP20 - SWIRL POT SETUP FOR TI PUMP



Engineered to win



- SWIRL POT INTERNAL VOLUME: 373 ML
- -6 JIC FITTING TORQUE = 17NM
- -3 JIC FITTING TORQUE = 8NM
- 60 MICRON PRE-FILTER
- TI AUTOMOTIVE INLINE HIGH PRESSURE FUEL PUMP
- 222 L/HOUR AT 5 BAR
- 3.0 BAR WEBER FUEL PRESSURE REGULATOR INCLUDED
- TO BE MOUNTED WITHIN 5° OF VERTICAL
- MUST BE FED BY A LOW PRESSURE LIFT PUMP

Frame: 1 of 1

Version: 8

Tel 01746 768810

© JENVEY DYNAMICS LTD. 2015

Web WWW.JENVEY.CO.UK

